

Growth Corridors & Landscape Approaches – *Enhancing the Chances of Irrigation Success?*

Dr Mark Smith

Director

IUCN Global Water Programme

Gland, Switzerland



become a supporter

subscribe



search

Jobs dating more + International edition -

theguardian

home > UK world sport football opinion culture business lifestyle fashion environment tech travel

≡ browse all sections

home > environment > wildlife energy pollution climate change

Environment
Elephant conservation

Tanzania's ghost safari: how western aid contributed to the decline of a wildlife haven

Lions, elephants and hippos have vanished from Kilombero valley after UK- and US-funded projects helped turn a once-thriving habitat into farmland, teak, and sugar plantations



Lions, elephants and hippos have all vanished from Kilombero valley, Tanzania. Photograph: Sophie Tremblay/for the Guardian

Supported by



About this content



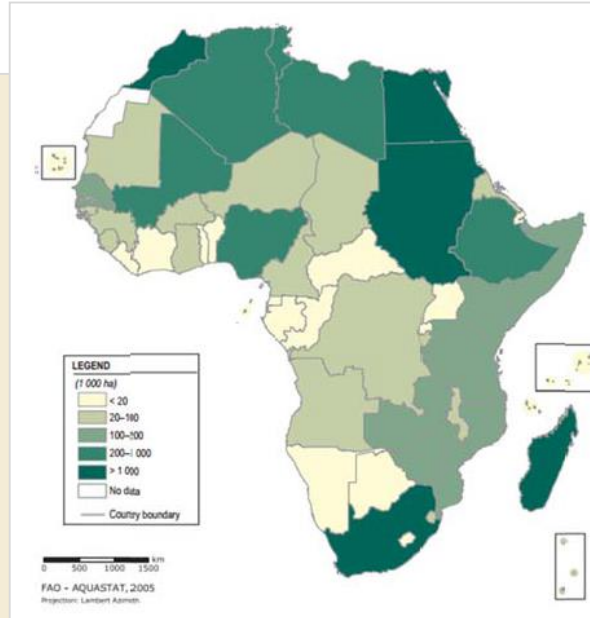
The long road from Dar es Salaam brings you through sparsely wooded hills and fields to the narrow northern neck of the Kilombero valley. There's a bend in the road, then the land opens out, suddenly, in front of you.

Along the west side lie the steep-faced Udzungwa mountains, one of the last pristine rainforests in Tanzania. The Kilombero river runs through the red soils of the valley, flooding in November or December and subsiding by June. Down the longer eastern flank rise the Mahenge mountains, and beyond them, invisible,

Irrigation: Ambition



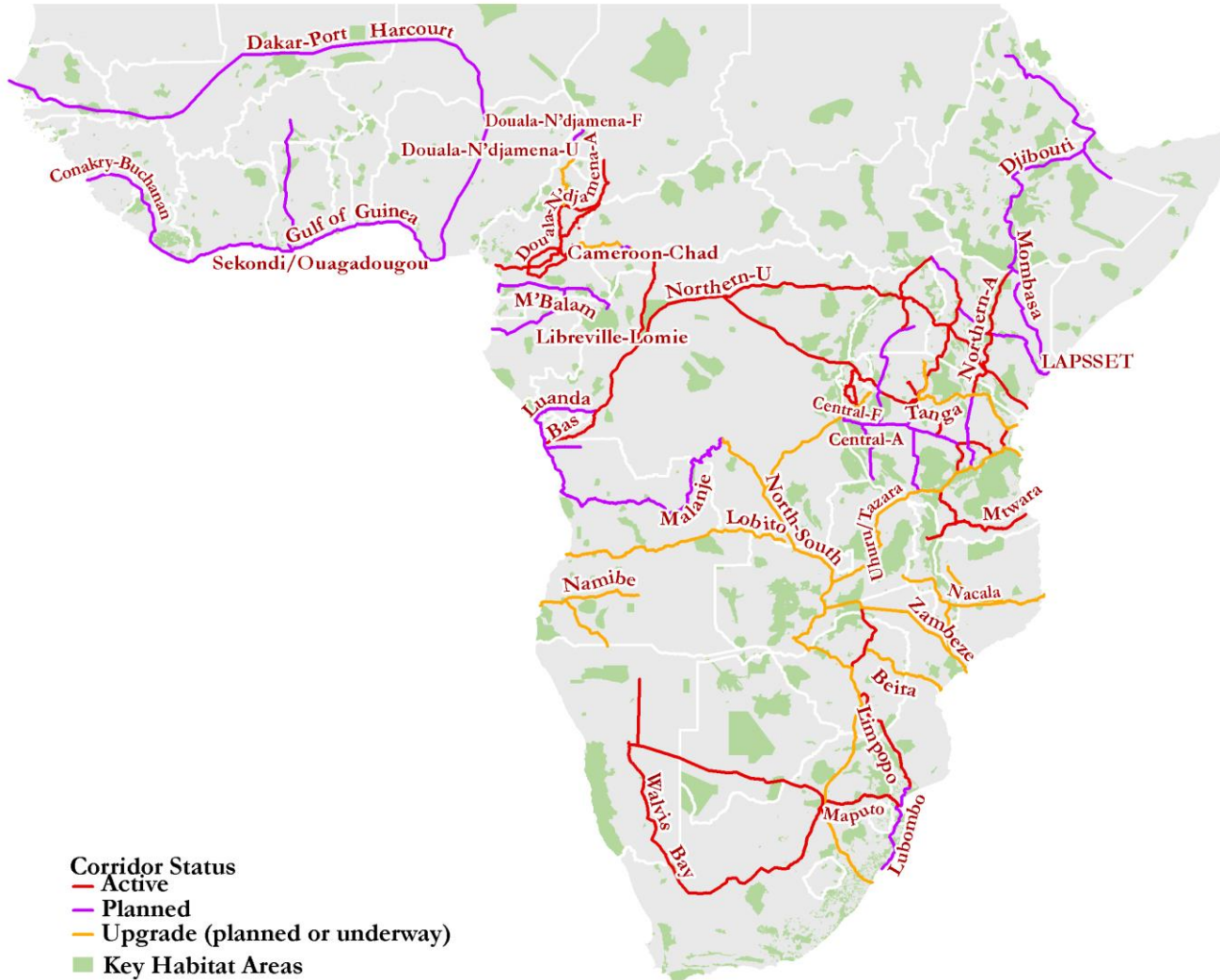
MALABO DECLARATION ON
ACCELERATED AGRICULTURAL GROWTH AND
TRANSFORMATION FOR SHARED PROSPERITY
AND IMPROVED LIVELIHOODS



Installed irrigation
(FAO, 2005)

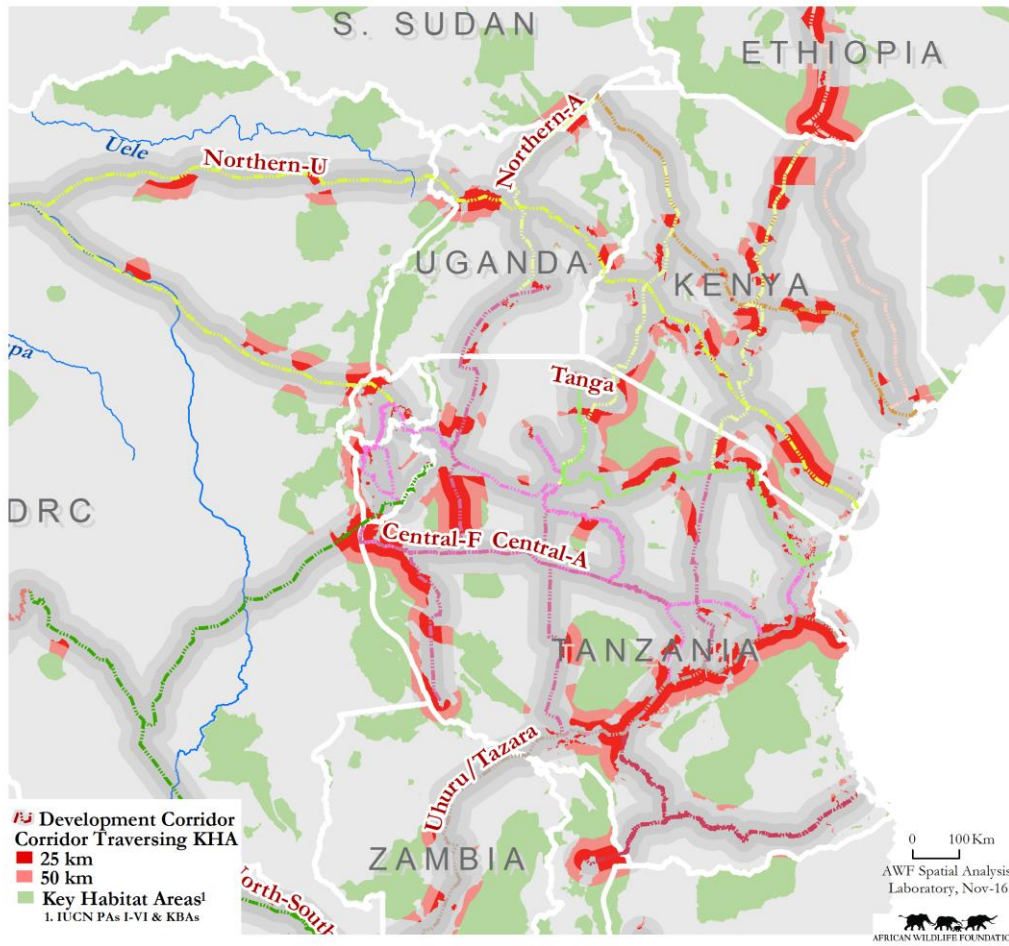
- CAADP target: 6% annual growth agric. GDP
- Current SSA irrigation equipped: 7.1m ha
- Modelled potential increase (IFPRI, 2010):
 - large-scale irrigation: 16.3m ha
 - small-scale irrigation: 7.3m ha

Growth Corridors



- Corridor Status**
- Active
 - Planned
 - Upgrade (planned or underway)
 - Key Habitat Areas

Interface of Growth Corridors + KHAs



SAGCOT Investment Blueprint

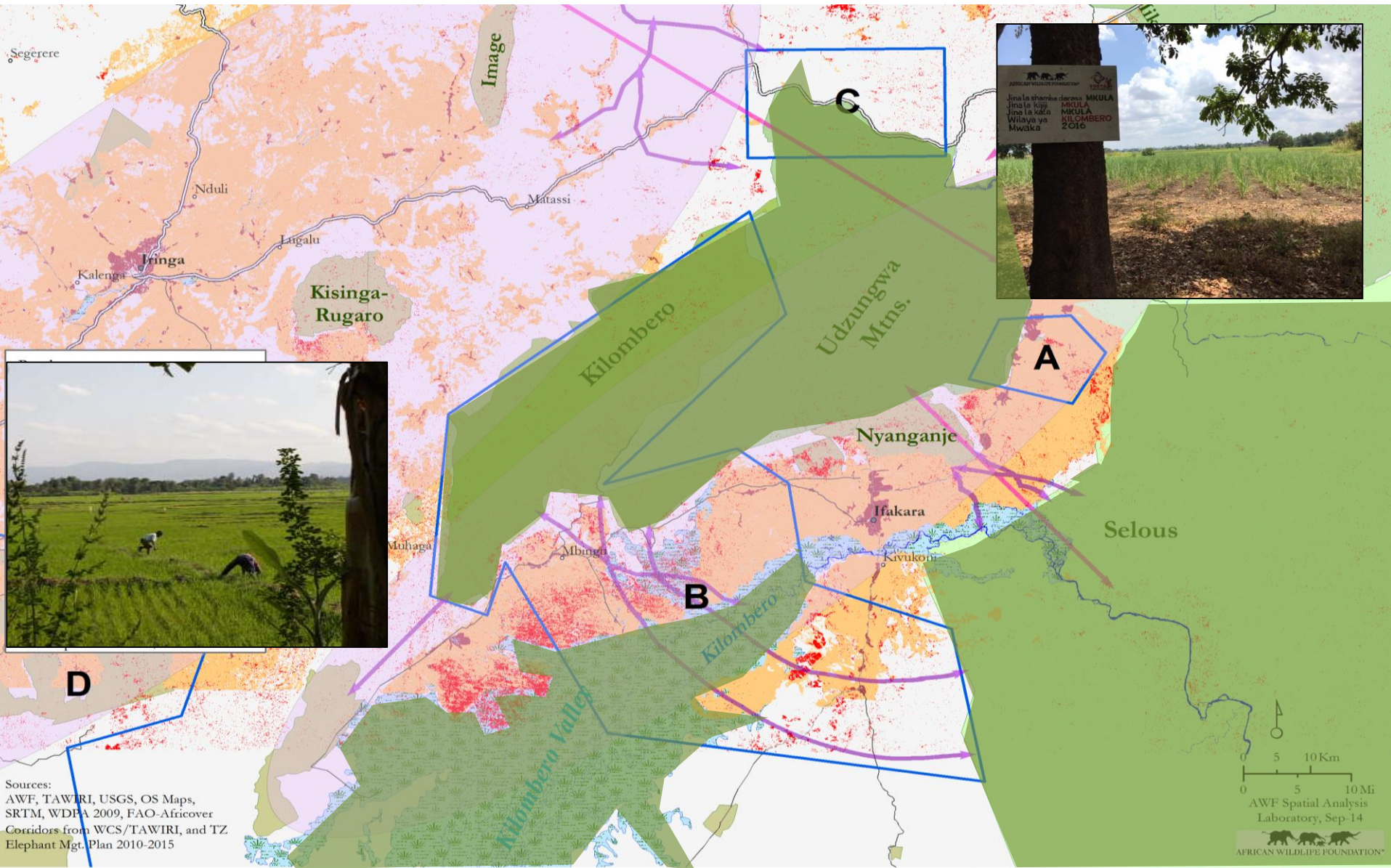
- 350k ha commercial prod.
- 420k new jobs in value chains
- 2m people lifted out of poverty
- 224k ha irrigation
- 22k irrigated outgrower s/h farmers



SUSTAIN-Africa

**Sustainability and Inclusion Strategy
for Growth Corridors in Africa**

Kilombero Valley



Sources:
AWF, TAWIRI, USGS, OS Maps,
SRTM, WDPFA 2009, FAO-Africover
Corridors from WCS/TAWIRI, and TZ
Elephant Mgt. Plan 2010-2015

Interest-Driven Partnerships

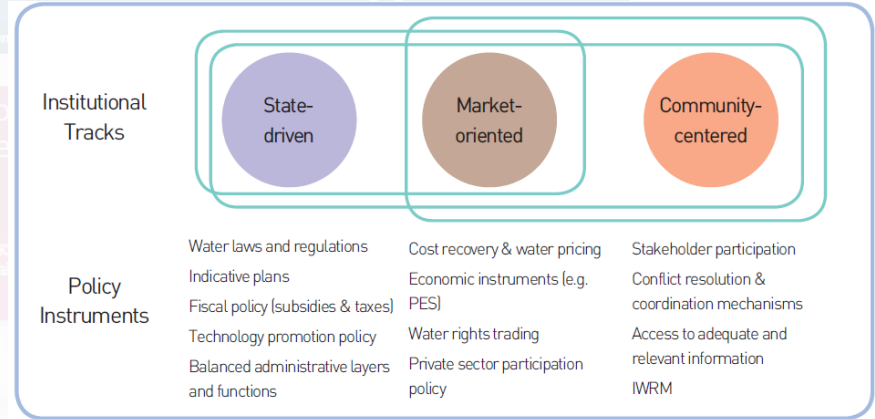
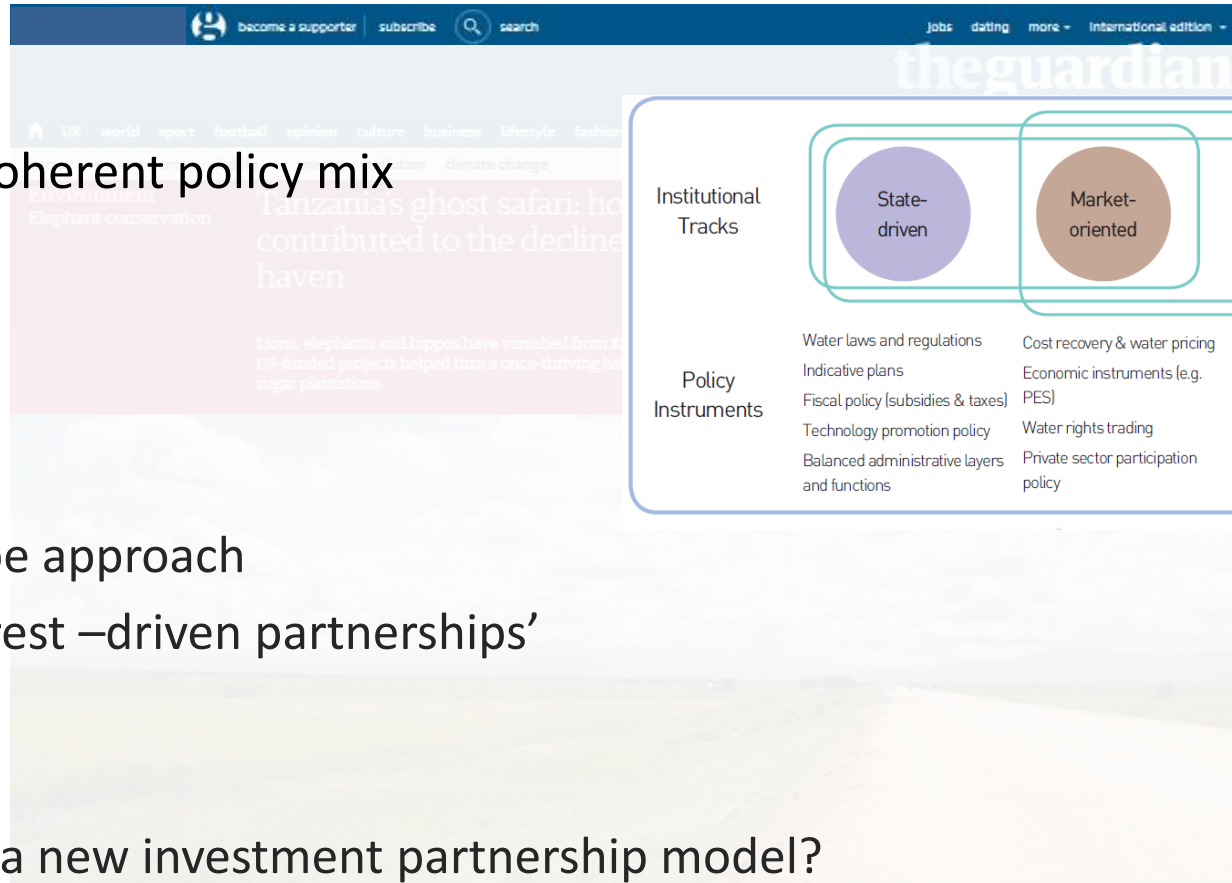
- Landscape partnerships for, e.g.:
 - catchment restoration & sedimentation control
 - forest restoration & access
 - flow restoration (Sumbawanga)

| Stakeholders | Interests |
|-----------------------|---|
| Rice investor | production, sediment, conflict risk |
| Catchment communities | Investment, livelihoods, soil retention |
| Govt & RBO | Plans implemented, effective WUAs |

- Strengthening enabling conditions
 - voice and rights
 - Governance and land and water planning
- Enabling irrigation success – integrate AIPs?
- New investment partnership model

Conclusions – changing the story

- Takes a coherent policy mix



- Landscape approach
 - ‘interest –driven partnerships’

- Enabling a new investment partnership model?



The long road from Dar es Salaam brings you through sparsely wooded hills and fields to the narrow northern neck of the Kilombero valley. There's a bend in the road, then the land opens out, suddenly, in front of you.

Along the way, you see the Kilombero river, one of the last pristine rainforests in Tanzania. The Kilombero river runs through the red soils of the valley, flooding in November or December and subsiding by June. Down the longer eastern flank rise the Mahenge mountains, and beyond them, invisible,